

# Springfield

OREGON

**20XX**

**PROGRAM APPLICATION**





# CITY OF SPRINGFIELD

CITY MANAGER'S OFFICE  
CITY RECORDER  
COMMUNITY RELATIONS



225 FIFTH STREET  
SPRINGFIELD, OR 97477  
541.726.3700  
FAX 541.726.2363  
[www.ci.springfield.or.us](http://www.ci.springfield.or.us)

February 18<sup>th</sup>, 2011

Robert Liberty, Executive Director  
Sustainable Cities Initiative Program  
University of Oregon  
1206 University of Oregon  
Eugene, OR 97403-1206

Dear Director Liberty:

On behalf of the City of Springfield, I am very pleased for the opportunity to apply to partner with the University of Oregon to become the next Sustainable Cities Year Community. The City of Springfield has a long history of successfully implementing sustainable programs and projects and continues to strive for new and improved ways to make great changes in both our physical and social community.

Over the past several years, the City has strategically invested in plan development efforts in order to better position ourselves for the anticipated economic rebound. These planning efforts continue to focus on our Council's adopted goals for the community by consistently providing the best services through the most sustainable practices. Our opportunities are often only limited by our lack of available staff-time and resources. A partnership with University of Oregon Students would bring high valued and scarce resources and assistance to the City and Community.

This potential partnership is embraced by all members of our Springfield City Council including the Mayor, and the opportunity to engage them at any and all appropriate Sustainable City Year milestones will be utilized. As was the case with last year's City of Springfield submittal, continued energy is shared by our Springfield Public Schools, Willamalane Park and Recreation District and Springfield Utility Board partners, all focused on moving Springfield forward and doing so in the most sustainable, efficient, and effective of ways.

Our staff has very thoughtfully compiled the project list included in our proposal and we are quite excited about, and committed to, this year's SCI proposal. We acknowledge that the University of Oregon is an invaluable resource and the Sustainable Cities Program is our opportunity to tap into those resources, bright minds, and creative thinkers, all while continuing to develop and implement sustainable practices within the City of Springfield.

As always, I look forward to the opportunity to partner with the University of Oregon and the Sustainable Cities Initiative Program Staff and Students.

Sincerely,

A handwritten signature in blue ink, appearing to read 'Gino Grimaldi', is written over a horizontal line.

Gino Grimaldi  
City Manager, City of Springfield

**CITY OF SPRINGFIELD INFORMATION**

City Manager	Gino Grimaldi
	541.726.3700
	ggrimaldi@springfield-or.gov
Assistant City Manager	Jeff Towery
	541.726-3700
	jtowery@springfield-or.gov
Project/Proposal Manager	Courtney Griesel
	541.736.7132
	cgriesel@springfield-or.gov
Mailing/Physical Address	City Manager’s Office
	225 Fifth Street
	Springfield, OR 97477

**20XX PARTNERING AGENCIES**

- Department of Geology and Mineral Industries
- Lane Transit District
- Metro Wastewater Management Commission
- Neighborhood Economic Development Corporation
- Oregon Department of Transportation
- Springfield Area Chamber of Commerce
- Springfield Public Library
- Springfield Public Schools
- Springfield Renaissance Development Corporation
- Springfield Utility Board
- Travel Lane County
- United Way of Lane County
- Willamalane Park and Recreation District

# UofO SUSTAINABLE CITIES INITIATIVE

The City of Springfield is, once again, excited to submit our application to be the next University of Oregon Sustainable Cities Year community. Over the last two years, City of Springfield staff and community elected officials have had the opportunity to follow the work being done by SCY in both Gresham and Salem. University students have been empowered in both communities to study and analyze current systems and provide feedback and innovative policy and development recommendations that, are not only cutting edge but, bring new perspective and energy to the municipalities.

Springfield proudly continues to strive toward new and innovative ways to implement sustainable practices in everyday operations but often our own crutch is a lack of staff resources. The SCY program's ability to fill the gap between our desired practices and limited resources is an ideal match of skill and bright minds. Our staff is both excited and committed to providing the SCY program with support and guidance on projects. We acknowledge the direct correlation between the success and functionality of the student work and the amount and quality of staff time made available for support.

As eager as our City staff is for a successful partnership with the SCY program, similarly are our agency partners. Our relationships, both private and public, and open lines of communication with our community partners allow us to promote local business, support our civic interests and grow as a community utilizing the support, resources and shared goals located within our own region. Issues that affect one partner, affect us all, which is why the City of Springfield often approaches projects as a united front with those impacted.

An example of an agency partnership that would be utilized in many of the proposed projects is Team Springfield, an energized partnership that includes the city's four public agencies; the City of Springfield, Springfield School District 19, Willamalane Park and Recreation District, and Springfield Utility Board. Unlike any other partnership in Oregon, Team Springfield fosters common goals by allowing each entity to bring their concerns, needs, projects and priorities to the same table to be addressed by the larger community. This relationship has been critical in nurturing great change and success within the Springfield community and will serve as a critical tool in turning Sustainable Cities Initiative (SCI) projects into reality in Springfield.

The City of Springfield values its many other community partnerships. Springfield has been a long standing supporter and partner with Lane Transit District. In the last year, LTD opened the newest EmX line along Pioneer Parkway and with a regional stop at the new Gateway Station. This work occurred because of the hard work, collaboration, and support from LTD and City staff as well as the greater Springfield community.

Along with our larger regional partners, Springfield has often joined with smaller grass roots organizations to generate highly visible and successful projects. In recent years, the Neighborhood Economic Development Corporation moved its regional office into the Downtown core. They very quickly became a high valued, high energy, partner with the City of Springfield. This partnership has yielded, to mention only a few, a successful Farmer's Market, Downtown Retail Support Programs, a national Main Street program designation, a Downtown Business Incubator, and numerous other projects in the works and in application. The City's relationships with NEDCO will continue to yield great rewards in the future and we are excited at the possibility of adding their partnership to our list of resources for SCI projects.

# UofO SUSTAINABLE CITIES INITIATIVE

The City of Springfield has been a leader in sustainable practices for more than 30 years, tackling local issues ranging from waste and stormwater management to urban and suburban redevelopment. The City of Springfield is the first and only jurisdiction in Oregon to create two separate Urban Renewal Districts by voter approval. Constrained by dramatic hillsides and rivers to our North and South, the City has worked tirelessly to develop efficiently and respectfully within our natural boundary as well as our current growth boundary. City staff has been active partners and administrators of the Metro Wastewater Management Commission since its inception in the late 1970's working diligently to provide responsible and healthy wastewater best practices to both Springfield and Eugene.

Our Environmental Services staff continues to set and attain new and higher standards related to sustainability and natural resources. Coordinating the City's goal of reducing the impact of development on our natural waterways with the needs of everyday business is evident in many of the partnerships with local merchants. In 2007, the City of Springfield launched an innovative Best Management Practices (BMP) manual for auto repair shops. In the year following staff had already completed inspections of over 80 local auto repair facilities, helping owners to properly manage the automotive waste and stormwater runoff generated from their facilities. Subsequently, the City established a program awarding a "Clean Water Business" certification to those businesses working to reduce pollutants.

In 2009, the City participated on the regional Association of Clean Water Agencies (ACWA) Pretreatment committee to facilitate consistency in policy, implementation and problem solving by bringing together pretreatment administrators from throughout Oregon. The City of Springfield currently implements a pretreatment program that, not only scored high marks when audited as federally required but, is well respected regionally. In addition to the numerous Environmental Services workshops and community events hosted by City staff each year, the City is current partners with the Pollution Prevention Coalition, ACWA group, Master Recycler Program, Groundwater Guardians, McKenzie Watershed Emergency Response System, Stormwater Pollution Task Force, the Master Gardener Program and many other community and regionally based, sustainability focused, groups.

Springfield is proud of its relationships and ability to work with property owners and developers on difficult developments, reaching agreements that are to the benefit of both the project and the impacted property owners. It has always been the practice of City staff to examine the issues that may arise from development, not as barriers but, as characteristics that when resolved will contribute to the overall success of the project. These relationships with our citizens are what continue to allow us to turn policy and planning into realities.

City staff has identified funding for coursework, report preparation and necessary related expenses (including appropriate in-state travel) that would allow us to participate and respond to fiscal needs when and as they are identified. The City of Springfield has the benefit of multiple funds from which to finance involvement in the SCI program including, but not limited to, an Opportunity Fund typically funded annually at \$50,000, two Urban Renewal Districts, Room Tax Revenue and numerous contractual services funds.

The Springfield City Council, staff, and community partners are excited and honored at the chance to apply to work with the University of Oregon faculty and students to bring a vast number of opportunities and impactful projects to the Springfield Community and larger region.

## CITY OF SPRINGFIELD MISSION STATEMENT

Make Springfield a Preferred and Desirable Place to Live and Work

## CITY OF SPRINGFIELD COUNCIL GOALS 20XX-20XX

- Provide Financially Responsible and Stable Government Services
- Provide Community and Economic Development and Revitalization
  - Enhance Public Safety
- Effectively Create a Positive Environment that Values Diversity and Encourages Inclusion
  - Maintain and Improve Infrastructure and Facilities
- Preserve Our Hometown Feel, Livability and Environmental Quality

Listed below are potential course topics identified by Springfield Staff. They are listed in order of student activity. It is anticipated that more ideas may develop and not all ideas will result in coursework.

Potential Course Topics:

- A. LAURA STREET ANALYSIS AND RETROFIT**
- B. SPRINGFIELD PROMISE NEIGHBORHOOD PROJECT**
- C. SUSTAINABLE SUBURBAN REDESIGN**
- D. WILLAMALANE BIKE PATH CONNECTIVITY PLAN**
- E. GATEWAY PEDESTRIAN AND BIKE ACCESSIBILITY ANALYSIS**
- F. MAIN STREET CORRIDOR PLANS**
- G. FORM BASED CODE DEVELOPMENT**
- H. GLENWOOD RESIDENTIAL CORE DESIGN STANDARDS**
- I. SPRINGFIELD SCHOOL DISTRICT 19 RAINBOW NEIGHBORHOOD PROPERTY**
- J. BOOTH KELLY REDESIGN**
- K. LIBRARY DEVELOPMENT**
- L. WAREMART REDEVELOPMENT CONCEPTUAL PLAN**
- M. CITYWIDE WAYFINDING**
- N. DOWNTOWN WAYFINDING**
- O. DOWNTOWN CATALYTIC PROJECT RECRUITMENT**
- P. SPRINGFIELD TOMORROW VISIONING & UPDATE**
- Q. RESIDENTIAL ENERGY EFFICIENCY**
- R. DEMONSTRATION STORMWATER AREAS**
- S. METRO WASTEWATER MANAGEMENT COMMISSION (MWMC) OUTREACH**
- T. CONFLUENCE ISLAND RECLAMATION PLAN**
- U. SUSTAINABILITY METRICS**
- V. CONVERSION OF CITY VEHICLE FLEET TO ELECTRIC VEHICLES**



# UofO SUSTAINABLE CITIES INITIATIVE: City of Springfield Proposal Projects/Course Topics 20XX

Course Topic Detailed Description:

## A. LAURA STREET ANALYSIS AND RETROFIT

The Laura Street neighborhood in Springfield is situated between a large transportation corridor, bustling big box commercial center, and a large industrial warehouse area. It is a neighborhood with very few traditional residential nuances and is often plagued by above average levels of criminal activity. This may be a multi-term or phased project with phase 1 resulting in students researching the area to identify the negative and positive characteristics and related trends and phase 2 determining design ideas and actions to positively respond to or change development habits.

This information might be used in a multitude of ways, ranging from increased social outreach and program development to the implementation of specific design standards aimed at changing the identified negative trends.

Supporting Council Goal(s):	To Encourage Community and Economic Development Revitalization To Effectively Create a Positive Environment that Values Diversity and Encourages Inclusion To Enhance Public Safety To Preserve the Hometown Feel, Livability and Environmental Quality
Student Deliverable(s):	Laura Street Neighborhood Analysis, Re-Design Concepts
Partnering City Department(s):	Economic Development, Development Services, Public Works, City Manager's Office

## B. SPRINGFIELD PROMISE NEIGHBORHOOD PROJECT

There is a national "Promise Neighborhoods" movement to develop a continuum of "cradle through college and career" solutions to improve the educational and developmental outcomes of all children in our most distressed communities. United Way of Lane County has identified two neighborhoods within the region as Promise Neighborhoods. One of these neighborhoods is the Springfield Brattain area. Students would work within the Brattain area to survey demographics and program gaps in Partnership with United Way of Lane County and possibly the Neighborhood Economic Development Corporation (NEDCO).

Supporting Council Goal(s):	To Encourage Community and Economic Development Revitalization To Effectively Create a Positive Environment that Values Diversity and Encourages Inclusion To Preserve the Hometown Feel, Livability and Environmental Quality
Student Deliverable(s):	Brattain Neighborhood Demographic and Characteristic Survey, Program Gap Analysis
Community Partner(s):	United Way of Lane County, NEDCO, Springfield Public Schools, Willamalane Park and Recreation
Partnering City Department(s):	Development Services, Economic Development, City Manager's Office



## C. SUSTAINABLE SUBURBAN REDESIGN

Students might analyze the suburban areas of Springfield identifying sustainability goals and investigating how the neighborhoods could be modified to attain these goals. Students could study neighborhoods while identifying the ideal commercial areas for each and providing direction for making the connection between more walkable. The students could produce a retrofit plan and details of the project area with recommendations and standards for redesigning the neighborhood commercial development and infill potentials.

Supporting Council Goal(s):	To Encourage Community and Economic Development Revitalization To Enhance Public Safety To Preserve the Hometown Feel, Livability and Environmental Quality
Student Deliverable(s):	Neighborhood Inventory with Resource Identification, Walkability Analysis, Redesigns of Neighborhood Commercial Development, Identification of Future Commercial Development Infill Opportunities
Partnering City Department(s):	Development Services, City Manager's Office

## D. WILLAMALANE BIKE PATH CONNECTIVITY PLAN

The Willamalane Park and Recreation District is responsible for maintaining the City of Springfield's bike paths. The current bike path system is disconnected, with multiple dead ends and paths that were not necessarily developed in congruence with one another.

Students would analyze the current bike path system, identifying the dead ends and gaps and propose connections to make the system complete. This would be a system-wide project, including areas not yet incorporated into Springfield city limits, partnering with the Willamalane Park and Recreation District. A possible final product would include a Bike Path Connectivity Plan to be reviewed and potentially adopted into future plans.

Supporting Council Goal(s):	To Enhance Public Safety To Maintain and Improve Infrastructure and Facilities To Preserve the Hometown Feel, Livability and Environmental Quality
Student Deliverable(s):	Bike Path Inventory and Analysis, Bike Path Connectivity Plan
Community Partner(s):	Willamalane Park and Recreation District
Partnering City Department(s):	Public Works, Development Services, City Manager's Office

## E. GATEWAY PEDESTRIAN AND BIKE ACCESSIBILITY ANALYSIS

The Gateway area is one of Springfield’s busiest shopping and hospitality centers. With multiple big box commercial developments, including the Gateway Mall, and the majority of Lane County’s hotels located in one place, the Gateway area should be one of the most pedestrian and bike accessible destinations, but it is not. Students might research the Gateway and surrounding areas to determine what the major contributors to its inaccessibility are. They might propose multiple ways to address these issues and improve pedestrian and bike accessibility and the overall ambiance of the Gateway area.

The student proposals and ideas would be reviewed by transportation staff and possibly incorporated into future Gateway design standards.

Supporting Council Goal(s):	To Encourage Community and Economic Development Revitalization To Enhance Public Safety To Maintain and Improve Infrastructure and Facilities To Preserve the Hometown Feel, Livability and Environmental Quality
Student Deliverable(s):	Gateway Area Multi-Modal Facility Inventory and Analysis, Facility Improvement Recommendations and Concepts
Community Partner(s):	Oregon Department of Transportation, Lane Transit District
Partnering City Department(s):	Public Works, Development Services, City Manager’s Office

## F. MAIN STREET CORRIDOR PLANS

Main Street runs from East to West connecting both ends of Springfield. Operating as a State Highway and serving local and non-local traffic, Main Street is one of the City’s most active corridors. Students would examine the different neighborhoods and commercial/industrial centers along Main Street and propose Corridor Plans for safe and efficient transportation system development taking into consideration future needs to link the corridor to the Lane Transit District’s EmX Routes. These plans typically look to project future growth within the neighborhoods and commercial/centers and examine the future transportation facility necessary to safely serve these areas.

This project would likely include the Lane Transit District and the Oregon Department of Transportation as a partner providing them and the City with Corridor Plans for future consideration.

Supporting Council Goal(s):	To Encourage Community and Economic Development Revitalization To Enhance Public Safety To Maintain and Improve Infrastructure Facilities
Student Deliverable(s):	Main Street Corridor Plan
Community Partner(s):	Oregon Department of Transportation, Lane Transit District
Partnering City Department(s):	Public Works, Development Services, City Manager’s Office

**G. FORM BASED CODE DEVELOPMENT**

This may be a 2 phased project. Initially, students may work to provide the City with a case study of form based codes with comparisons to the City of Springfield. An analysis around the potential success or conflict of form based codes in Springfield would assist staff in having a constructive conversation with City Council. Students might then examine the current development codes and standards and the Council Goals and draft a sample set of Form Based Codes or other code modifications that reflect these goals and standards. These modifications and recommendations would be utilized during future code development or redevelopment.

Supporting Council Goal(s):	To Encourage Community and Economic Development Revitalization To Preserve the Hometown Feel, Livability and Environmental Quality
Student Deliverable(s):	Form Based Code Case Study, Draft Springfield Specific Form Based Code
Partnering City Department(s):	Development Services, City Manager’s Office

**H. GLENWOOD RESIDENTIAL CORE DESIGN STANDARDS**

Springfield staff has been working to update the current Glenwood Refinement Plan. Situated In the center of Glenwood is the residential core filled with homes dating to the very early 1900’s and trees even older. Developed with very few to no parameters, the physical characteristics of the Glenwood residential core are unlike any other in Springfield.

The area is in need for close study to determine which characteristics should be preserved and which should be updated. What type of design standards should exist for development in this unique residential core and do the current City Codes support these ideas? If not, how could the codes be retro-fitted to accomplish these goals while still preserving the neighborhoods unique characteristics? The student work would provide staff with ideas and (re)development standards to be adopted into the current Glenwood Refinement Plan update process.

Supporting Council Goal(s):	To Encourage Community and Economic Development Revitalization To Preserve the Hometown Feel, Livability and Environmental Quality
Student Deliverable(s):	Analysis and Identification of Current Housing & Potential Assets, Preservation Recommendations, Development Design Standards, City Development Code Review and Update Recommendations
Partnering City Department(s):	Development Services Department, City Manager’s Office

## I. SPRINGFIELD SCHOOL DISTRICT 19 RAINBOW NEIGHBORHOOD PROPERTY

Springfield School District 19 (SD19) currently owns approximately 13 ½ acres of vacant land in West Springfield. This property is surrounded by residential and anticipated to develop into a non-SD19 use at some point in the future.

Students would analyze the site and surrounding neighborhood and propose urban design ideas while considering the needs of the Rainbow Drive Neighborhood. This project would partner with SD19.

Supporting Council Goal(s):	To Encourage Community and Economic Development Revitalization To Preserve the Hometown Feel, Livability and Environmental Quality
Student Deliverable(s):	Site Development Scenarios
Community Partner(s):	Springfield Public Schools
Partnering City Department(s):	Development Services, City Manager’s Office

## J. BOOTH KELLY REDESIGN

The City of Springfield currently owns and operates the Booth Kelly Center, which includes 17 acres of land and over 200,000 sq feet of large industrial building spaces currently renting to Springfield businesses. Once a very productive lumber mill, Booth Kelly was situated on the Springfield Mill Race Pond which is currently being restored. With the amenity of the Mill Race running along the Booth Kelly site, students might examine potential redevelopment scenarios and identify how the site can become a destination location with a pedestrian friendly appeal.

Booth Kelly is located in historic Downtown Springfield and will be directly impacted by and have direct impacts on any development activity in the downtown area. Staff is looking for redevelopment concept s and guidelines that can be adopted into a Downtown Refinement Plan

Supporting Council Goal(s):	To Encourage Community and Economic Development Revitalization To Preserve the Hometown Feel, Livability and Environmental Quality
Student Deliverable(s):	Site Redevelopment Scenarios, Site Specific Redevelopment Principles for Refinement Plan Inclusion
Partnering City Department(s):	Development Services, Public Works, City Manager’s Office



## K. LIBRARY DEVELOPMENT

The City of Springfield is looking to invest in a new Public Library at some point in the future. Students would examine the process to develop, finance, and construct a public library by:

- Designing a Silver LEED Certified building that incorporates some private business space. These designs would be used to gain public support for a new library while illustrating potential design ideas; and
- Drafting a financing plan and possibly a fundraising plan.

Supporting Council Goal(s):	To Offer Financially Responsible and Stable Government Services
	To Encourage Community and Economic Development and Revitalization
	To Effectively Create a Positive Environment that Values Diversity and Encourages Inclusion
	To Maintain and Improve Infrastructure and Facilities
	To Preserve the Hometown Feel, Livability and Environmental Quality
Student Deliverable(s):	LEED Certified Building Designs, Finance Plan, Fundraising & Outreach Plan
Community Partner(s):	Friends of the Springfield Library, Springfield Urban Renewal Agency
Partnering City Department(s):	Library, Development Services, Finance Department, City Manager’s Office

## L. WAREMART REDEVELOPMENT CONCEPTUAL PLAN

Over a decade ago the Springfield Waremart closed its Mohawk doors and reopened at its new building several doors down as WinCo. At this time the original Waremart building, at over 40,000 square feet, still stands mostly vacant and the site as a whole, at nearly 11 acres, is in need of new development. Students would propose urban design ideas for the site while examining the impacted Mohawk commercial area and the related constraints.

Supporting Council Goal(s):	To Encourage Community and Economic Development Revitalization
	To Preserve the Hometown Feel, Livability and Environmental Quality
Student Deliverable(s):	Mohawk Commercial Area Analysis, Urban Design and Site Redevelopment Concepts
Community Partner(s):	Site Private Property Owner
Partnering City Department(s):	Economic Development, Development Services, City Manager’s Office

## M. CITYWIDE WAYFINDING

The City of Springfield is steadily growing and with this growth services and amenities are often physically spread apart. Based on recommendations from a 2011 Visitor Readiness Report, the City is in need of a city-wide signage wayfinding update to better direct visitors and residents to different resources. Students might survey the City’s current network of wayfinding signage and then propose improvements in the form of, but not limited to; signage design recommendations, location identification, and informational brochures or handouts. This project would include a partnership with both the Springfield Area Chamber of Commerce and Travel Lane County in addition to appropriate staff.

<b>Supporting Council Goal(s):</b>	To Encourage Community and Economic Development Revitalization To Enhance Public Safety To Maintain and Improve Infrastructure and Facilities
<b>Student Deliverable(s):</b>	To Preserve the Hometown Feel, Livability and Environmental Quality Current Wayfinding Signage Inventory, Visitor Asset Inventory, Wayfinding Location Identification, Signage Designs, Education Brochure and Handout Package
<b>Community Partner(s):</b>	Springfield Area Chamber of Commerce, Travel Lane County, Oregon Department of Transportation
<b>Partnering City Department(s):</b>	Economic Development, City Manager’s Office, Development Services

## N. DOWNTOWN WAYFINDING

Similar to the Citywide wayfinding project, the Downtown Core benefits from a dense array of public amenities from shopping and recreation to public services and open space. The Downtown currently lack innovative wayfinding signage directing visitors to these amenities. Students might survey the Downtowns’ current network of signage and amenities and propose wayfinding improvements and options. This project would include a partnership with, among others, the Springfield Area Chamber of Commerce and the Oregon Department of Transportation.

<b>Supporting Council Goal(s):</b>	To Encourage Community and Economic Development Revitalization To Enhance Public Safety To Maintain and Improve Infrastructure and Facilities
<b>Student Deliverable(s):</b>	To Preserve the Hometown Feel, Livability and Environmental Quality Current Wayfinding Signage Inventory, Visitor Asset Inventory, Wayfinding Location Identification, Signage Designs, Education Brochure and Handout Package
<b>Community Partner(s):</b>	Springfield Area Chamber of Commerce, Travel Lane County, Oregon Department of Transportation, NEDCO
<b>Partnering City Department(s):</b>	Economic Development, City Manager’s Office, Development Services

## O. DOWNTOWN CATALYTIC PROJECT RECRUITMENT

Over the last several years the City of Springfield has worked with planners Crandall and Arambula to create a Downtown plan. This adopted plan includes the identification of potential catalytic project sites that if developed, would help to stimulate redevelopment throughout the Downtown area. With these sites identified, staff has begun looking for qualified developers and stakeholders to initiate development.

Students might learn about the process of identifying and recruiting developers by working with the City and private firms to match the downtown catalytic project sites to potential development opportunities. These matches may be realized as future developments.

Supporting Council Goal(s):	To Encourage Community and Economic Development Revitalization To Preserve the Hometown Feel, Livability and Environmental Quality
Student Deliverable(s):	Catalytic Project Proposals, Developer Recruitment
Community Partner(s):	Neighborhood Economic Development Corporation, Springfield Area Chamber of Commerce, Willamalane Park and Recreation District, Springfield Public Schools, Lane Metro Partnership
Partnering City Department(s):	Economic Development, Development Services, City Manager's Office

## P. SPRINGFIELD TOMORROW VISIONING & UPDATE

Springfield Tomorrow is a community visioning effort championed by Team Springfield. The last update to Springfield Tomorrow was completed in 2005 and identified key community values as well as numerous strategies and action items to be completed by 2010. Students could work to provide an updated review of the identified key community values and action items. This work might include a study of current perceptions of the City in the media over the last 10-15 years with recommendations for actions to address these perceptions and progress towards strengthening our key community values. It is important that this work be done in partnership with the Springfield community so utilizing a community based focus group approach, possibly facilitated by students, would be of great value.

Supporting Council Goal(s):	To Encourage Community and Economic Development Revitalization To Effectively Create a Positive Environment that Values Diversity and Encourages Inclusion To Enhance Public Safety
Student Deliverable(s):	To Preserve the Hometown Feel, Livability and Environmental Quality Review and Update to 2005 Springfield Tomorrow Vision, Focus Group Work
Community Partner(s):	Springfield Public Schools, Willamalane Park and Recreation District, Springfield Utility Board
Partnering City Department(s):	City Manager's Office

## **Q. RESIDENTIAL ENERGY EFFICIENCY**

The Mid-Springfield Neighborhoods are some of the oldest neighborhoods in Springfield. Many are low income and in need of substantial energy efficiency updates. Students could identify which areas are in the greatest need and with what type of updates, what would the cost be to update the homes and what would the yielded savings be to each household. Students could then outline a program to retrofit the residential neighborhoods with the identified updates.

Supporting Council Goal(s):	To Encourage Community and Economic Development Revitalization To Preserve the Hometown Feel, Livability and Environmental Quality
Student Deliverable(s):	Need Analysis, Cost Analysis, Energy Upgrade Analysis, Program Development
Community Partner(s):	Springfield Utility Board, NEDCO
Partnering City Department(s):	Public Works, Development Services, Housing, City Manager's Office

## **R. DEMONSTRATION STORMWATER AREAS**

Across the City of Springfield are natural areas, parks, and various forms of public open space. These areas, as well as others, are prime locations for demonstrations of efficient and innovative storm & wastewater runoff treatment designs (rain gardens, roadside swales, pervious pavement techniques, etc.). Students would work to identify locations and appropriate demonstration themes. Students could then begin the process of turning concept into complete operational design, specific to the identified location. These demonstration areas could be designed to promote community access to both the site as well as the concept by providing interpretive kiosks with 'take home' ideas for applying similar methods around the home. This project would likely be done utilizing our TEAM Springfield Partnership.

Supporting Council Goal(s):	To Preserve the Hometown Feel, Livability and Environmental Quality
Student Deliverable(s):	Site Selection and Principle Demonstration Theme Identification, Demonstration Design, Interpretive Kiosk Design
Community Partner(s):	Springfield Utility Board, Willamalane Park and Recreation District, Springfield School District 19, Metro Wastewater Management Commission
Partnering City Department(s):	Public Works, City Manager's Office



## S. METRO WASTEWATER MANAGEMENT COMMISSION (MWMC) OUTREACH

The City of Springfield has been an active partner and managing entity for the MWMC for over 30 years. One of the MWMC’s primary missions is to raise public awareness and understanding of not only the Commission but the regional wastewater system and its relation to Willamette River quality. The MWMC is currently working to identify ways to reduce the temperature of wastewater entering the system. One identified solution would be to encourage each household within Springfield to adjust their personal water heaters from the typical 120 degrees to 118 degrees.

Students would work with the City of Springfield and the MWMC to develop a public outreach and education program encouraging individual households to turn down their water heaters. This program might be put into effect, potentially solving one of the MWMC systems major issues.

Supporting Council Goal(s):	To Maintain and Improve Infrastructure and Facilities To Preserve the Hometown Feel, Livability and Environmental Quality
Student Deliverable(s):	Identified and Recommended Thermal Reducing Best Practices, Public Outreach and Educational Program Package
Community Partner(s):	Metro Wastewater Management Commission, Springfield Utility Board
Partnering City Department(s):	Public Works, City Manager’s Office

## T. CONFLUENCE ISLAND RECLAMATION PLAN

The Metropolitan Wastewater Management Commission (MWMC) is the regional organization charged with protecting the public’s health, safety and the local environment by providing high quality management of wastewater conveyance and treatment throughout the Eugene-Springfield community. MWMC is currently engaged in discussions with multiple restoration interests, in cooperation with a local aggregate business, on the potential site management opportunities for Confluence Island, a 180 acre site located at the confluence of the McKenzie River with the Willamette River. The island holds state park land, industrial gravel mining land, and natural resource lands. Reclamation of the gravel operations will be overseen by the Department of Geology and Mineral Industries. The MWMC and the aggregate operator have discussed potential to enhance the reclaimed gravel pits for treated wastewater effluent management, which could provide habitat benefits as well as effluent cooling prior to discharging to the Willamette River. Other interests are focused on park and recreation opportunities and floodplain and habitat restoration. Several studies of the site have been conducted, including restoration potential, fish and habitat values, and reclamation plan alternatives. University students would take the Confluence Island project to the next level by studying optimization of the site for long-range, sustainable, community benefits.

Supporting Council Goal(s):	To Preserve the Hometown Feel, Livability and Environmental Quality
Student Deliverable(s):	Confluence Island Long Range Plan
Community Partner(s):	MWMC, Department of Geology and Mineral Industries
Partnering City Department(s):	Public Works, City Manager’s Office

## U. SUSTAINABILITY METRICS

The City of Springfield has been working to improve its efficiency and sustainability efforts. Staff has spent time identifying key areas of desired improvement within City owned facilities. These improvements are primarily focused on capital improvement investments and potential actions for implementation that might yield more sustainable improvements. One example of a key area of desired improvement is City lighting standards. Students might examine the identified key areas and actions and create surveys and inventories of current practices and sustainability metrics and indices to ensure that practices may be changed and that sustainable concepts are turned into effective action plans.

Supporting Council Goal(s):	To Offer Financially Responsible and Stable Government Services To Maintain and Improve Infrastructure and Facilities
Student Deliverable(s):	City Owned Facility Inventories, Identification of Applicable and Recommended Sustainable Practices, Conversion or Action Plans
Community Partner(s):	Springfield Utility Board
Partnering City Department(s):	Public Works, Development Services, City Manager’s Office

## V. CONVERSION OF CITY VEHICLE FLEET TO ELECTRIC VEHICLES

The City of Springfield has been in discussions around retiring the current gas powered city vehicle fleet and purchasing electric vehicles. This shift from gas consumption to electric hybrids would need a detailed level of cost analysis and planning. Additionally charging stations would need to be planned for and strategically placed throughout the City.

This is a citywide project with the Springfield Utility Board as a potential partner. Staff is looking for a cost analysis and citywide plan illustrating phasing of vehicle replacement and locating of charging stations. A feasibility analysis of the need and or benefit from an area joint fleet facility would also be of benefit. Based on these products, staff might begin conversations with the Springfield City Council regarding feasibility of a partial or full fleet conversion.

Supporting Council Goal(s):	To Offer Financially Responsible and Stable Government Services To Maintain and Improve Infrastructure and Facilities
Student Deliverable(s):	Cost Analysis, City-Wide Phased Plan, Joint Fleet Facility Feasibility Analysis
Community Partner(s):	Springfield Utility Board
Partnering City Department(s):	Public Works, City Manager’s Office



T  
(approx.  
3.5 mi.)

## UO Sustainable Cities Initiative - City of Springfield, OR

(city-wide proposals not shown on map)

- |   |  |
|---|--|
| <b>A. Laura Street Analysis and Retrofit</b>            | <b>L. Waremart Redevelopment Conceptual Plan</b>       |
| <b>B. Springfield Promise Neighborhood Project</b>      | <i>M. City-Wide Wayfinding</i>                         |
| <i>C. Sustainable Suburban Redesign</i>                 | <b>N. Downtown Wayfinding</b>                          |
| <i>D. Willamalane Bike Path Connectivity Plan</i>       | <b>O. Downtown Catalytic Project Recruitment</b>       |
| <b>E. Gateway Pedestrian/Bike Accesibility Analysis</b> | <i>P. Springfield Tomorrow Visioning and Update</i>    |
| <b>F. Main Street Corridor Plans</b>                    | <b>Q. Residential Energy Efficiency</b>                |
| <i>G. Form-based Code Development</i>                   | <i>R. Demonstration Stormwater Areas</i>               |
| <b>H. Glenwood Residential Core Design Standards</b>    | <i>S. MWMC Outreach</i>                                |
| <b>I. School Dist. 19 Rainbow Neighborhood Property</b> | <b>T. Confluence Island Reclamation Plan</b>           |
| <b>J. Booth-Kelly Redesign</b>                          | <i>U. Sustainability Metrics</i>                       |
| <b>K. Library Development</b>                           | <i>V. Conversion of City Vehicle Fleet to Electric</i> |

City UGB 0 0.25 0.5 1 Mile



There are no warranties that accompany this product. Users assume all responsibility for any loss or damage arising from any error, omission or positional inaccuracy of this product.

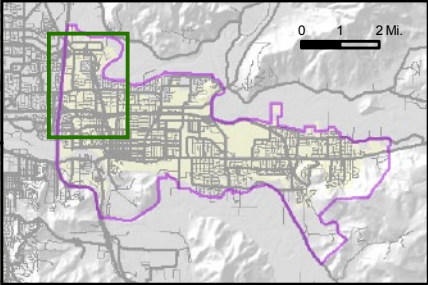




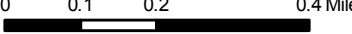
# UO Sustainable Cities Initiative - City of Springfield, OR

**E. Gateway  
Pedestrian  
Accessibility  
Analysis**

**A. Laura Street  
Analysis & Retrofit**



 City UGB

 0 0.1 0.2 0.4 Mile



There are no warranties that accompany this product. Users assume all responsibility for any loss or damage arising from any error, omission or positional inaccuracy of this product.





# UO Sustainable Cities Initiative - City of Springfield, OR

S. School Dist. 19  
Rainbow property

F. Waremart Site  
Redevelopment

B. Promise  
Neighborhood

K. Library  
Development

N & O. Downtown  
Wayfinding and  
Catalyst Recruitment

D. Glenwood  
Residential Core

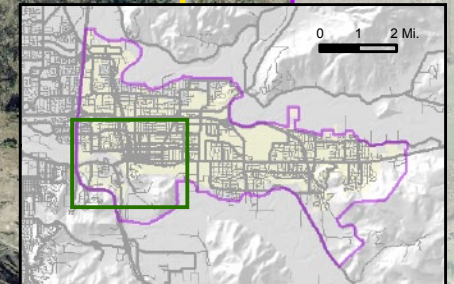
B. Booth-Kelly  
Redesign

 City UGB

0 0.125 0.25 0.5 Mile



There are no warranties that accompany this product. Users assume all responsibility for any loss or damage arising from any error, omission or positional inaccuracy of this product.





# UO Sustainable Cities Initiative - City of Springfield, OR

**Q. Residential  
Energy Efficiency**

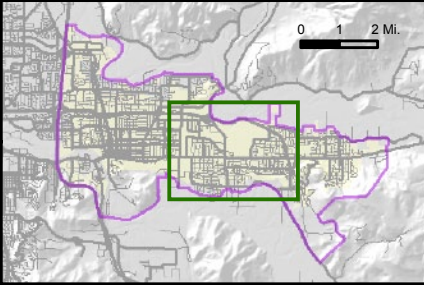
**F. Main Street Corridor Plans**

 City UGB

0 0.125 0.25 0.5 Mile

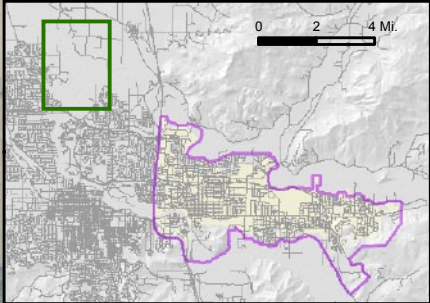


There are no warranties that accompany this product. Users assume all responsibility for any loss or damage arising from any error, omission or positional inaccuracy of this product.





**UO Sustainable Cities Initiative - City of Springfield, OR**



**T. Confluence Island Reclamation Plan**

Willamette R.

McKenzie R.

 City UGB

0 0.125 0.25 0.5Mile



There are no warranties that accompany this product. Users assume all responsibility for any loss or damage arising from any error, omission or positional inaccuracy of this product.

